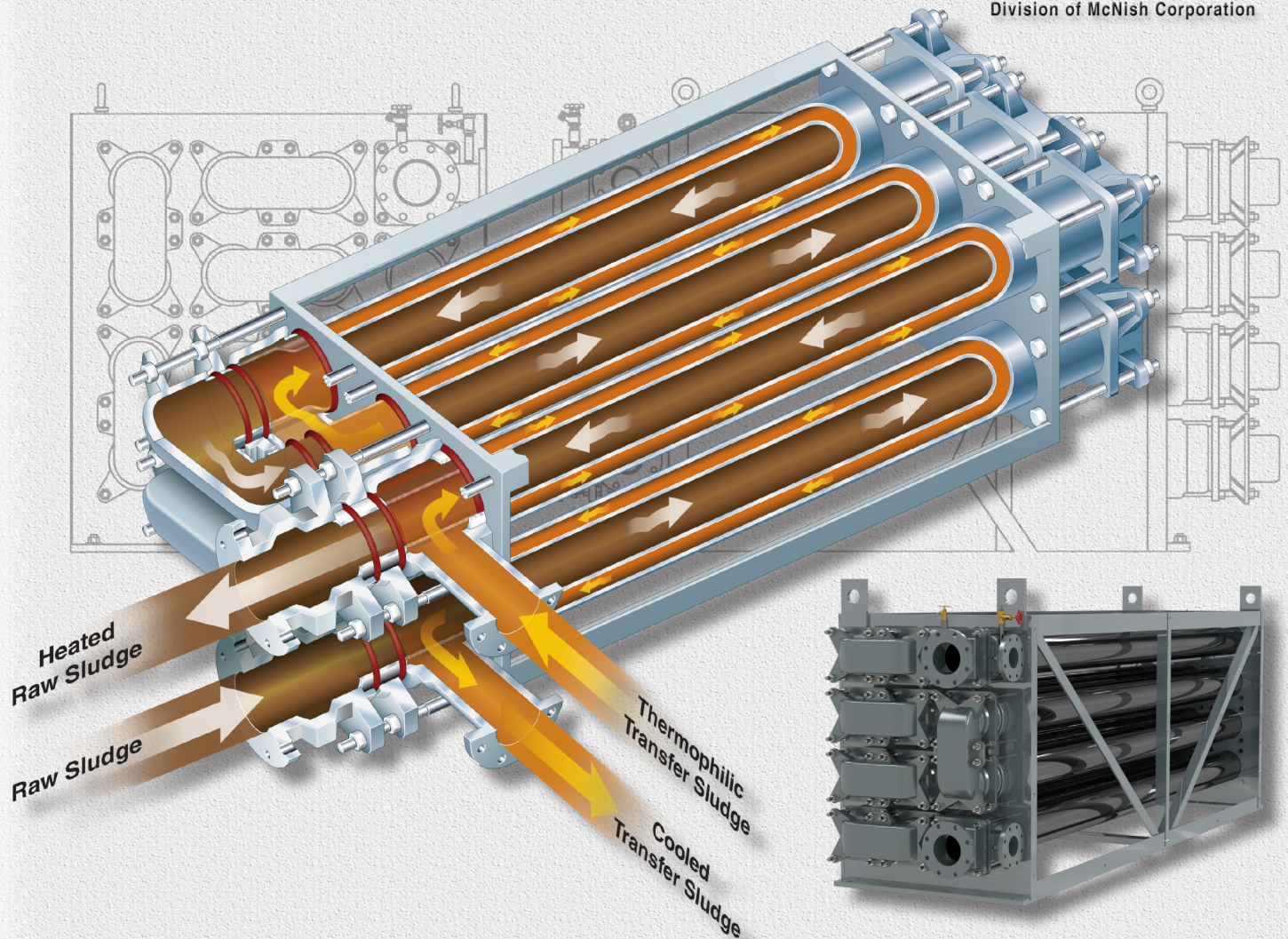


# Sludge-to-Sludge Heat Exchanger



Division of McNish Corporation



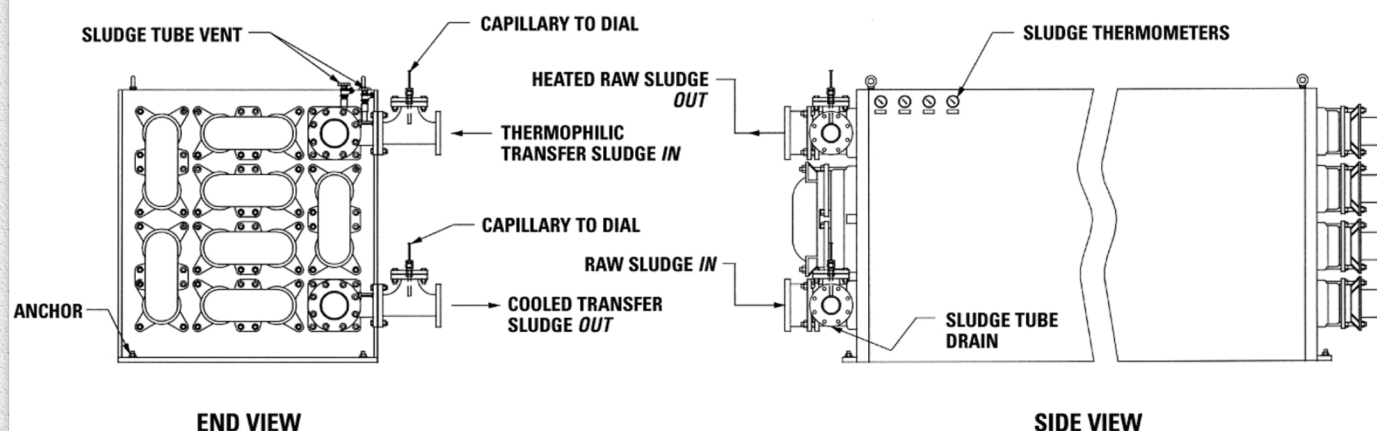
## Cool Thermophilic Sludge and Reduce Sludge Heating Requirements

The easy to install, easy to maintain **Sludge-to-Sludge Heat Exchanger** from Walker Process® provides a means to cool thermophilic sludge and reduces the amount of energy required to heat raw sludge.

### Sludge to Sludge Heat Exchanger By Walker Process Equipment:

- Provides a means to cool thermophilic sludge.
- Reclaims heat from thermophilic sludge to preheat raw sludge.
- Reduces overall energy requirements for heating sludge in the Temperature Phased Anaerobic Digestion (TPAD) process.
- Has a tube-in-tube heat exchanger designed, tested, inspected and stamped in compliance with ASME pressure vessel code requirements.
- Exhibits low headloss with less tendency for plugging.
- Is fully shop assembled for easy field installation and startup.





## Stringent Adherence to Industry Standards

Walker Process® Sludge-to-Sludge Heat Exchangers are designed and manufactured in compliance with ASME Pressure Vessel Code and all units are stamped with the Unfired Pressure Vessel “U” symbol.

The Sludge-to-Sludge heat exchanger uses the same proven design features that have been developed and refined over the many decades this design has been in use.

<b>Sizes</b>	Up to 24 tubes and up to 20ft. long.
<b>Pipe Diameters</b>	Inner Sludge Tubes - 5" Dia. Outer Sludge Tubes - 8" Dia.
<b>Materials of Construction</b>	ASME SA 53 Sch. 40 Carbon Steel Pipes ¾" ASTM A36 Carbon Steel End Plates ASME SA 278 Class 40 Cast Iron End Fittings.
<b>Pressure Rating</b>	75 psi standard.
<b>Insulation</b>	2" wrapped Fiberglass Insulation.
<b>Enclosure</b>	14 ga. Painted Steel Enclosure on sides and top.
<b>Temperature Control</b>	Non-flow-restrictive temperature sensors and dial thermometers to measure inlet and outlet sludge temperatures; thermocouple and Resistance Temperature Detector (RTD) for remote indication of parameters.
<b>Other Features</b>	Built-in water back-flushing connections. Easily removable end castings for inspections and servicing.

## Walker Process Equipment

Division of McNish Corporation

840 N. Russell Ave. • Aurora, IL 60506 • 1-800-992-5537

[www.walker-process.com](http://www.walker-process.com)